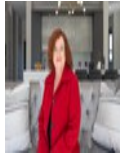


**Anri Visser**  
060 528 3364  
anri@love-it.properties



**Berni Erasmus - Office Number**  
071 310 9527

enquiries@love-it.properties

Contact Head Office

071 3109527

Plot 103 Hennopsrivier  
Pretoria  
0001

## 2 Bedroom Apartment For Sale in Midfield Estate



SOLE MANDATE

Web Ref RL968



**R3,250,000**

🛏 2 🚿 2 🚗 2

**Monthly Bond Repayment** R32,447.35

Calculated over 20 years at 10.5% with no deposit.

**Transfer Costs** R192,188.00 **Bond Costs** R45,955.00

These calculations are only a guide. Please ask your conveyancer for exact calculations.

**Monthly Levy** R3,470 **Monthly Rates** R2,620

### Luxury 2-Bedroom Apartment with Golf Course Views in Ascend to Midstream

LPM25-025.1

! EXCLUSIVE MANDATE !

Key Features:

2 Spacious Bedrooms & 2 Modern Bathrooms – Master suite with en-suite bathroom and stunning golf course views  
Semi Furnished Sale – Includes block-out blinds, curtains, lounge sofa, coffee table, dishwasher, washing machine and double fridge  
Breathtaking Views – Overlooking the lush Midfield Golf Course and scenic dams  
State-of-the-Art Amenities – Rooftop entertainment area, pool, cinema, gym, and workspaces  
No Load Shedding – Supported by backup generators for uninterrupted luxury living

Experience Exclusive Estate Living

Step into a world of modern elegance with this third-floor, 2-bedroom, 2-bathroom apartment in the prestigious Ascend to Midstream. Designed for those who appreciate quality, convenience, and breathtaking scenery, this lock-up-and-go home boasts...

### Features

<b>Pets Allowed</b>		Yes			
<b>Interior</b>				<b>Sizes</b>	
Bedrooms	2	<b>Exterior</b>		Floor Size	149m <sup>2</sup>
Bathrooms	2	Garages	2		
Kitchens	1	Security	Yes		
Recep. Rooms	2	Pool	No		
Furnished	No	Views	True		
<b>Extras</b>					
Security Estate Gym Fenced Pool					