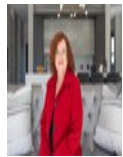




**Willie Marais IV**  
0843083495  
willie.iv@love-it.properties



**Marais Jansen**  
0724238665  
marais@love-it.properties



**Berni Erasmus - Office Number**  
071 310 9527

enquiries@love-it.properties

Contact Head Office

071 3109527

Plot 103 Hennopsrivier  
Pretoria  
0001

## On Show



9:00 to 17:00



Wednesday, 18 June 2025

### Directions

ON SHOW BY APPOINTMENT

## 4 Bedroom House For Sale in Fountainbrook Estate



ON SHOW

Web Ref RL781



## R4,477,000

🛏 4 🚿 4.5 🚗 2

**Monthly Bond Repayment** R45,451.80

Calculated over 20 years at 10.75% with no deposit.

**Transfer Costs** R340,479.00 **Bond Costs** R57,265.00

These calculations are only a guide. Please ask your conveyancer for exact calculations.

**Monthly Rates** R3,793.3

## Unveil the Essence of Modern Living with Our Exclusive Building Packages in Fountainbrook Estate

Welcome to a world of contemporary luxury, where sleek design meets functionality.

- Concept Plans to choose from or design with Architect.
- Choose between double- or single-story options.
- New homes from R3,5m.
- Building sizes from 200m2.
- Stand sizes between 450m2 and 850m2.
- Clubhouse and private open spaces.
- No transfer duty.
- Directly from the Developer.
- Choose your own finishes.

Fountainbrook Estate presents an incredible Plot & Plan opportunity with a Concept Building Package. Review the thoughtfully crafted concept plan and collaborate with our Developer and Architect to customize your dream home just the way...

## Features

**Pets Allowed** Yes

### Interior

|              |     |
|--------------|-----|
| Bedrooms     | 4   |
| Bathrooms    | 4.5 |
| Kitchens     | 1   |
| Recep. Rooms | 3   |
| Furnished    | No  |

### Exterior

|             |       |
|-------------|-------|
| Garages     | 2     |
| Security    | Yes   |
| Dom. Accom. | 1     |
| Pool        | No    |
| Views       | False |

### Sizes

|            |                   |
|------------|-------------------|
| Floor Size | 254m <sup>2</sup> |
| Land Size  | 488m <sup>2</sup> |

### Extras

Security Estate